

2016-2018

# Top 10 Medical Conditions

## TOP 10 DIAGNOSIS

## Top Condition Male by Allowed amount and year

	Year	Gender	Condition	TotalAllowed	TotalPaid
1 <sup>st</sup>	2016	M	OTHER GENERAL SYMPTOMS AND SIGNS	\$ 141,669,399.20	\$ 122,961,061.40
2 <sup>nd</sup>	2016	M	DISORDER OF TOOTH DEVELOPMENT UNSPECIFIED	\$ 24,931,291.00	\$ 18,602,244.50
3 <sup>rd</sup>	2016	M	END STAGE RENAL DISEASE	\$ 15,680,974.80	\$ 13,296,395.00
4 <sup>th</sup>	2016	M	ENCOUNTER FOR ANTINEOPLASTIC CHEMOTHERAPY	\$ 15,620,261.20	\$ 14,641,845.70
5 <sup>th</sup>	2016	M	SEPSIS UNSPECIFIED ORGANISM	\$ 13,991,333.60	\$ 11,750,085.80
6 <sup>th</sup>	2016	M	SINGLE LIVEBORN INFANT DELIVERED VAGINALLY	\$ 13,388,280.30	\$ 10,945,109.90
7 <sup>th</sup>	2016	M	ENCOUNTER RTN CHILD HEALTH EXAM W/O ABNORML FIND	\$ 13,156,161.70	\$ 12,441,146.20
8 <sup>th</sup>	2016	M	SINGLE LIVEBORN INFANT DELIVERED BY CESAREAN	\$ 12,625,844.10	\$ 11,486,514.20
9 <sup>th</sup>	2016	M	ENCOUNTER SCREENING MALIGNANT NEOPLASM OF COLON	\$ 12,363,027.50	\$ 10,459,781.90
10 <sup>th</sup>	2016	M	ASHD NATIVE CORONARY ARTERY W/O ANGINA PECTORIS	\$ 12,235,424.00	\$ 10,228,420.80
	Year	Gender	Condition	TotalAllowed	TotalPaid
1 <sup>st</sup>	2017	M	OTHER GENERAL SYMPTOMS AND SIGNS	\$ 136,703,978.40	\$ 117,196,978.50
2 <sup>nd</sup>	2017	M	DISORDER OF TOOTH DEVELOPMENT UNSPECIFIED	\$ 25,226,658.10	\$ 18,744,944.20
3 <sup>rd</sup>	2017	M	END STAGE RENAL DISEASE	\$ 16,173,657.90	\$ 12,715,419.10
4 <sup>th</sup>	2017	M	SEPSIS UNSPECIFIED ORGANISM	\$ 15,832,478.40	\$ 13,755,421.50
5 <sup>th</sup>	2017	M	ENCOUNTER RTN CHILD HEALTH EXAM W/O ABNORML FIND	\$ 14,005,074.70	\$ 13,285,310.20
6 <sup>th</sup>	2017	M	ENCOUNTER SCREENING MALIGNANT NEOPLASM OF COLON	\$ 13,650,347.70	\$ 11,471,726.90
7 <sup>th</sup>	2017	M	ENCOUNTER FOR ANTINEOPLASTIC CHEMOTHERAPY	\$ 13,579,020.50	\$ 12,627,690.80
8 <sup>th</sup>	2017	M	ASHD NATIVE CORONARY ARTERY W/O ANGINA PECTORIS	\$ 12,039,240.30	\$ 9,823,706.30
9 <sup>th</sup>	2017	M	ENCOUNTER GEN ADULT MED EXAM W/O ABNORMAL FIND	\$ 11,532,075.90	\$ 9,631,749.00
10 <sup>th</sup>	2017	M	SINGLE LIVEBORN INFANT DELIVERED VAGINALLY	\$ 11,461,334.50	\$ 9,060,442.30
	Year	Gender	Condition	TotalAllowed	TotalPaid
1 <sup>st</sup>	2018	M	OTHER GENERAL SYMPTOMS AND SIGNS	\$ 127,553,925.80	\$ 110,513,240.70
2 <sup>nd</sup>	2018	M	DISORDER OF TOOTH DEVELOPMENT UNSPECIFIED	\$ 21,885,764.50	\$ 16,142,538.00
3 <sup>rd</sup>	2018	M	SEPSIS UNSPECIFIED ORGANISM	\$ 15,033,158.90	\$ 12,630,027.30
4 <sup>th</sup>	2018	M	END STAGE RENAL DISEASE	\$ 14,917,030.00	\$ 11,973,673.90
5 <sup>th</sup>	2018	M	ENCOUNTER FOR ANTINEOPLASTIC CHEMOTHERAPY	\$ 14,426,844.60	\$ 12,997,414.50

6 <sup>th</sup>	2018	M	SINGLE LIVEBORN INFANT DELIVERED BY CESAREAN	\$ 13,030,185.50	\$ 10,033,156.10
7 <sup>th</sup>	2018	M	SINGLE LIVEBORN INFANT DELIVERED VAGINALLY	\$ 12,486,957.30	\$ 9,178,204.00
8 <sup>th</sup>	2018	M	ENCOUNTER SCREENING MALIGNANT NEOPLASM OF COLON	\$ 12,102,177.00	\$ 10,069,685.00
9 <sup>th</sup>	2018	M	ENCOUNTER RTN CHILD HEALTH EXAM W/O ABNORML FIND	\$ 11,751,855.80	\$ 11,188,568.60
10 <sup>th</sup>	2018	M	ENCOUNTER GEN ADULT MED EXAM W/O ABNORMAL FIND	\$ 10,628,280.80	\$ 8,712,770.40

## Top Condition Female by Allowed Amount and year

	Year	Gender	Condition	TotalAllowed	TotalPaid
1 <sup>st</sup>	2016	F	OTHER GENERAL SYMPTOMS AND SIGNS	\$ 176,618,764.00	\$ 150,466,989.90
2 <sup>nd</sup>	2016	F	DISORDER OF TOOTH DEVELOPMENT UNSPECIFIED	\$ 28,168,351.00	\$ 20,931,366.50
3 <sup>rd</sup>	2016	F	ENCOUNTER FOR ANTINEOPLASTIC CHEMOTHERAPY	\$ 20,918,407.00	\$ 18,860,518.70
4 <sup>th</sup>	2016	F	ENCOUNTER SCREENING MALIGNANT NEOPLASM OF COLON	\$ 14,484,572.00	\$ 12,549,647.50
5 <sup>th</sup>	2016	F	ENCOUNTER GYN EXAM GENERAL RTN W/O ABNORMAL FIND	\$ 14,353,102.00	\$ 12,610,392.40
6 <sup>th</sup>	2016	F	SEPSIS UNSPECIFIED ORGANISM	\$ 13,465,780.00	\$ 12,152,564.10
7 <sup>th</sup>	2016	F	ENCOUNTER RTN CHILD HEALTH EXAM W/O ABNORML FIND	\$ 12,585,173.00	\$ 11,905,969.00
8 <sup>th</sup>	2016	F	ENCOUNTER SCREENING MAMMO MALIG NEOPLASM BREAST	\$ 12,528,201.00	\$ 11,366,933.80
9 <sup>th</sup>	2016	F	SINGLE LIVEBORN INFANT DELIVERED VAGINALLY	\$ 11,972,973.00	\$ 9,725,598.90
10 <sup>th</sup>	2016	F	ENCOUNTER FOR FULL-TERM UNCOMPLICATED DELIVERY	\$ 11,938,051.00	\$ 9,073,936.60

	Year	Gender	Condition	TotalAllowed	TotalPaid
1 <sup>st</sup>	2017	F	OTHER GENERAL SYMPTOMS AND SIGNS	\$ 171,012,494.00	\$ 144,933,006.40
2 <sup>nd</sup>	2017	F	DISORDER OF TOOTH DEVELOPMENT UNSPECIFIED	\$ 27,964,921.00	\$ 20,799,944.50
3 <sup>rd</sup>	2017	F	ENCOUNTER FOR ANTINEOPLASTIC CHEMOTHERAPY	\$ 18,920,655.00	\$ 16,915,720.70
4 <sup>th</sup>	2017	F	ENCOUNTER SCREENING MALIGNANT NEOPLASM OF COLON	\$ 15,453,674.00	\$ 13,251,668.00
5 <sup>th</sup>	2017	F	ENCOUNTER GYN EXAM GENERAL RTN W/O ABNORMAL FIND	\$ 14,607,145.00	\$ 12,817,915.60
6 <sup>th</sup>	2017	F	SEPSIS UNSPECIFIED ORGANISM	\$ 14,070,440.00	\$ 11,978,124.30
7 <sup>th</sup>	2017	F	ENCOUNTER RTN CHILD HEALTH EXAM W/O ABNORML FIND	\$ 13,234,617.00	\$ 12,554,580.70
8 <sup>th</sup>	2017	F	ENCOUNTER GEN ADULT MED EXAM W/O ABNORMAL FIND	\$ 13,157,116.00	\$ 11,024,201.00
9 <sup>th</sup>	2017	F	ENCOUNTER SCREENING MAMMO MALIG NEOPLASM BREAST	\$ 13,051,179.00	\$ 11,915,021.20
10 <sup>th</sup>	2017	F	SINGLE LIVEBORN INFANT DELIVERED VAGINALLY	\$ 11,159,896.00	\$ 8,838,954.80

	Year	Gender	Condition	TotalAllowed	TotalPaid
1 <sup>st</sup>	2018	F	OTHER GENERAL SYMPTOMS AND SIGNS	\$ 152,932,694.00	\$ 130,776,724.50
2 <sup>nd</sup>	2018	F	DISORDER OF TOOTH DEVELOPMENT UNSPECIFIED	\$ 24,219,042.00	\$ 17,830,383.30
3 <sup>rd</sup>	2018	F	ENCOUNTER FOR ANTINEOPLASTIC CHEMOTHERAPY	\$ 17,107,144.00	\$ 16,152,102.00
4 <sup>th</sup>	2018	F	SEPSIS UNSPECIFIED ORGANISM	\$ 14,521,896.00	\$ 11,689,029.10
5 <sup>th</sup>	2018	F	ENCOUNTER SCREENING MALIGNANT NEOPLASM OF COLON	\$ 13,747,569.00	\$ 11,795,341.40
6 <sup>th</sup>	2018	F	ENCOUNTER GEN ADULT MED EXAM W/O ABNORMAL FIND	\$ 12,016,808.00	\$ 9,974,161.20
7 <sup>th</sup>	2018	F	ENCOUNTER SCREENING MAMMO MALIG NEOPLASM BREAST	\$ 11,768,596.00	\$ 10,723,172.10
8 <sup>th</sup>	2018	F	ENCOUNTER GYN EXAM GENERAL RTN W/O ABNORMAL FIND	\$ 11,759,908.00	\$ 10,295,930.20
9 <sup>th</sup>	2018	F	ENCOUNTER RTN CHILD HEALTH EXAM W/O ABNORML FIND	\$ 11,305,012.00	\$ 10,735,538.50
10 <sup>th</sup>	2018	F	MULTIPLE SCLEROSIS	\$ 10,400,375.00	\$ 8,916,245.40

## Top Condition By allowed Amount and year

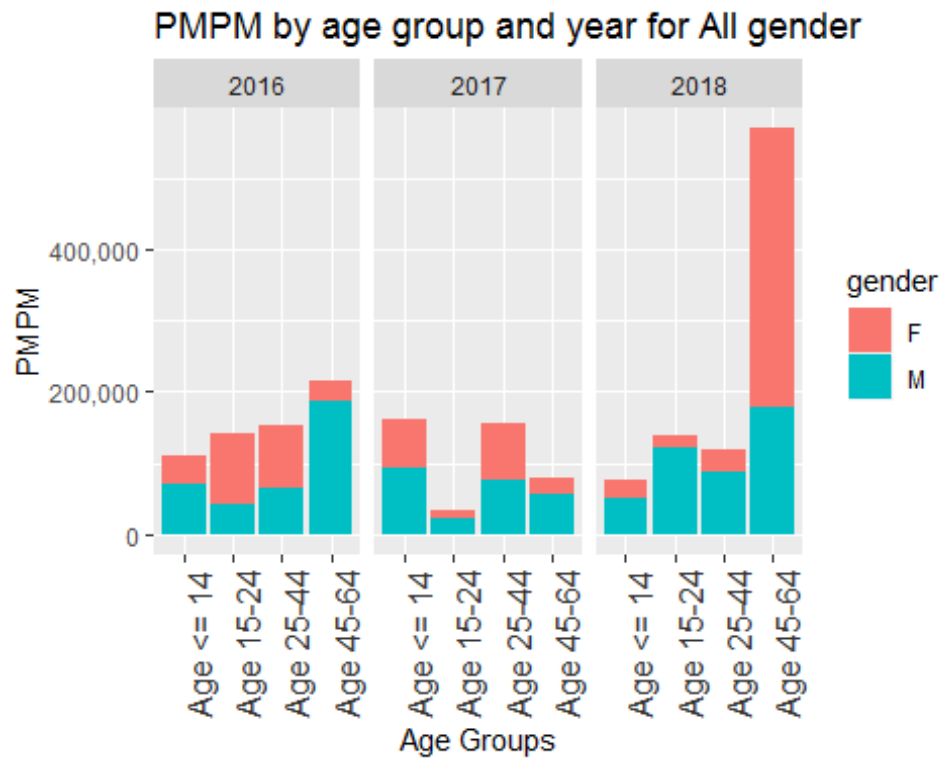
	Year	Condition	TotalAllowed	TotalPaid
1 <sup>st</sup>	2016	OTHER GENERAL SYMPTOMS AND SIGNS	\$ 318,288,163.00	\$ 273,428,051.20
2 <sup>nd</sup>	2016	DISORDER OF TOOTH DEVELOPMENT UNSPECIFIED	\$ 53,099,642.00	\$ 39,533,611.00
3 <sup>rd</sup>	2016	ENCOUNTER FOR ANTINEOPLASTIC CHEMOTHERAPY	\$ 36,538,669.00	\$ 33,502,364.40
4 <sup>th</sup>	2016	SEPSIS UNSPECIFIED ORGANISM	\$ 27,457,113.00	\$ 23,902,649.90
5 <sup>th</sup>	2016	ENCOUNTER SCREENING MALIGNANT NEOPLASM OF COLON	\$ 26,847,600.00	\$ 23,009,429.40
6 <sup>th</sup>	2016	ENCOUNTER RTN CHILD HEALTH EXAM W/O ABNORML FIND	\$ 25,741,522.00	\$ 24,347,302.90
7 <sup>th</sup>	2016	END STAGE RENAL DISEASE	\$ 25,691,053.00	\$ 22,530,313.30
8 <sup>th</sup>	2016	SINGLE LIVEBORN INFANT DELIVERED VAGINALLY	\$ 25,363,414.00	\$ 20,672,767.90
9 <sup>th</sup>	2016	SINGLE LIVEBORN INFANT DELIVERED BY CESAREAN	\$ 22,237,539.00	\$ 19,944,642.70

10 <sup>th</sup>	2016	ENCOUNTER GEN ADULT MED EXAM W/O ABNORMAL FIND	\$ 22,233,050.00	\$ 18,619,523.90

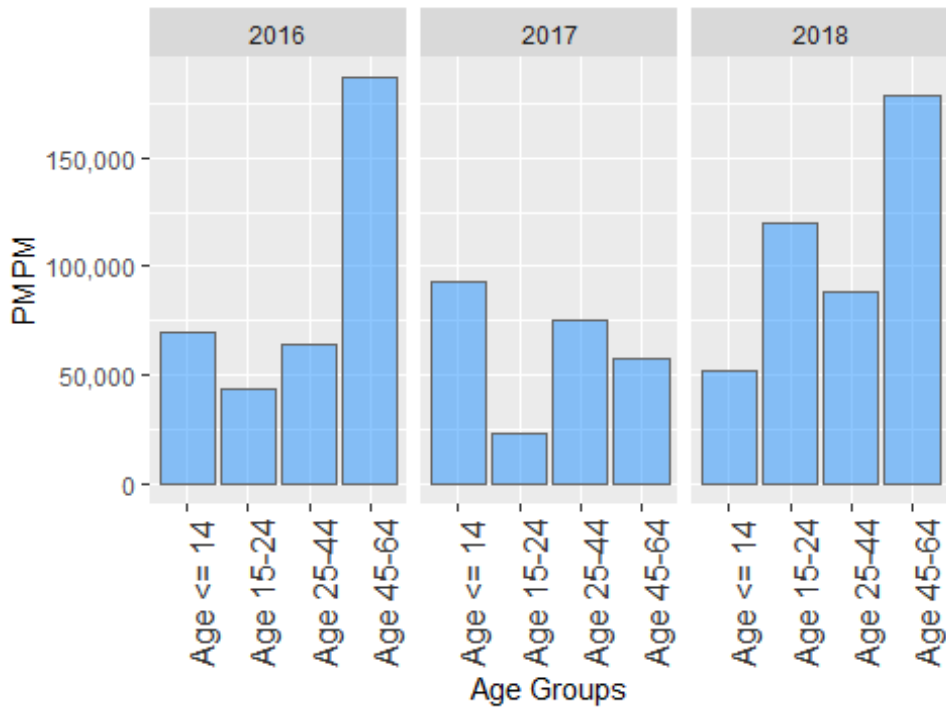
	Year	Condition	TotalAllowed	TotalPaid
1 <sup>st</sup>	2017	OTHER GENERAL SYMPTOMS AND SIGNS	\$ 307,716,472.00	\$ 262,129,984.80
2 <sup>nd</sup>	2017	DISORDER OF TOOTH DEVELOPMENT UNSPECIFIED	\$ 53,191,579.00	\$ 39,544,888.70
3 <sup>rd</sup>	2017	ENCOUNTER FOR ANTINEOPLASTIC CHEMOTHERAPY	\$ 32,499,675.00	\$ 29,543,411.50
4 <sup>th</sup>	2017	SEPSIS UNSPECIFIED ORGANISM	\$ 29,902,918.00	\$ 25,733,545.90
5 <sup>th</sup>	2017	ENCOUNTER SCREENING MALIGNANT NEOPLASM OF COLON	\$ 29,104,022.00	\$ 24,723,394.90
6 <sup>th</sup>	2017	END STAGE RENAL DISEASE	\$ 27,269,085.00	\$ 21,071,815.70
7 <sup>th</sup>	2017	ENCOUNTER RTN CHILD HEALTH EXAM W/O ABNORML FIND	\$ 27,239,691.00	\$ 25,839,890.90
8 <sup>th</sup>	2017	ENCOUNTER GEN ADULT MED EXAM W/O ABNORMAL FIND	\$ 24,689,192.00	\$ 20,655,950.10
9 <sup>th</sup>	2017	SINGLE LIVEBORN INFANT DELIVERED VAGINALLY	\$ 22,621,230.00	\$ 17,899,397.10
10 <sup>th</sup>	2017	OTHER CHEST PAIN	\$ 20,340,608.00	\$ 13,946,054.40

	Year	Condition	TotalAllowed	TotalPaid
1 <sup>st</sup>	2018	OTHER GENERAL SYMPTOMS AND SIGNS	\$ 280,486,620.00	\$ 241,289,965.20
2 <sup>nd</sup>	2018	DISORDER OF TOOTH DEVELOPMENT UNSPECIFIED	\$ 46,104,807.00	\$ 33,972,921.30
3 <sup>rd</sup>	2018	ENCOUNTER FOR ANTINEOPLASTIC CHEMOTHERAPY	\$ 31,533,989.00	\$ 29,149,516.50
4 <sup>th</sup>	2018	SEPSIS UNSPECIFIED ORGANISM	\$ 29,555,055.00	\$ 24,319,056.40
5 <sup>th</sup>	2018	ENCOUNTER SCREENING MALIGNANT NEOPLASM OF COLON	\$ 25,849,745.00	\$ 21,865,026.50
6 <sup>th</sup>	2018	END STAGE RENAL DISEASE	\$ 25,018,358.00	\$ 18,688,070.40
7 <sup>th</sup>	2018	ENCOUNTER RTN CHILD HEALTH EXAM W/O ABNORML FIND	\$ 23,056,868.00	\$ 21,924,107.10
8 <sup>th</sup>	2018	ENCOUNTER GEN ADULT MED EXAM W/O ABNORMAL FIND	\$ 22,645,089.00	\$ 18,686,931.60
9 <sup>th</sup>	2018	SINGLE LIVEBORN INFANT DELIVERED BY CESAREAN	\$ 21,469,728.00	\$ 17,354,103.20
10 <sup>th</sup>	2018	SINGLE LIVEBORN INFANT DELIVERED VAGINALLY	\$ 21,436,694.00	\$ 16,246,654.00

## Top Conditionby By PMPM , gender and year



**PMPM by age group and year for Males**



**PMPM by age group and year for Females**

